

DRILLING ROUNDED MATERIAL



- The UJK drill guide can be used to drill rounded material, ideal for chair legs, see pictures above.

CENTROTEC COMPATIBLE



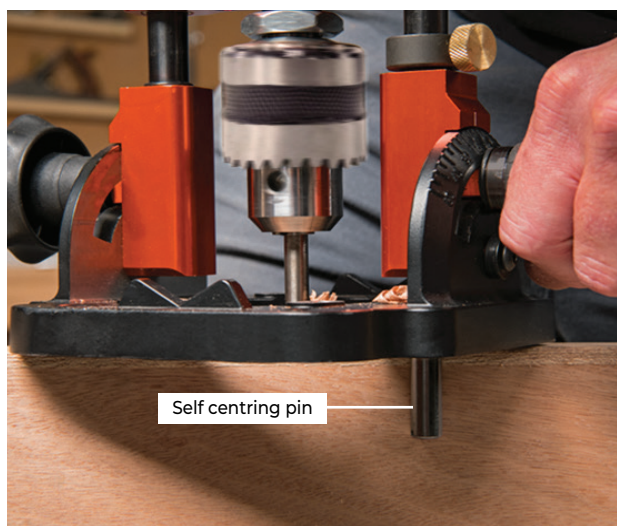
- The 1/4" Hex drive is Centrotec compatible



Drill Guide

- Hugely versatile, portable drill guide
- Accurate engineering guarantees accurate results
- Capable of drilling any angle between +/- 60°
- Set at 90° for perfectly perpendicular holes
- Takes bits or holesaws up to 60mm diameter
- Suitable for most power drills, mains or cordless

DRILLING MORTICE LOCK



Self centring pin



- The self centring pins will automatically centre the drill, perfect for drilling a mortice, see pictures above.

OPTIONAL ACCESSORIES



Mounting brackets

- Code 106216 Self Centring Vice for Drill Guide



UJK, Axminster Devon EX13 5PH
ujktools.com

Code: 106072
Date: 11.7.2024

INTRODUCTION

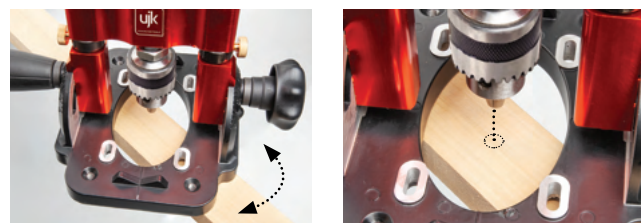
The drill guide provides extra stability and accuracy when you need to drill straight or at an angle. The beauty of the system is you can take your cordless drill and convert it to the near perfect accuracy of a pillar drill. Also, if you need to drill in the middle of a large sheet of material then a drill guide offers a solution that just isn't possible with a pillar drill. The drive shaft is a 1/4" hex allowing you to use either mains or cordless drills, **NOTE make sure the drill chuck is tightened securely right down over the hex drive shaft to prevent it from breaking under load.**

The chuck guide assembly runs between twin steel guide bars. Oil filled bronze bushes ensure a smooth action and zero play between the assembly and guide bars. There is enough space between the bars to accommodate most drills. A precision-machined main shaft runs inside another oil filled bronze bush for accuracy.



1 Remove the self centring pins from the guide assembly

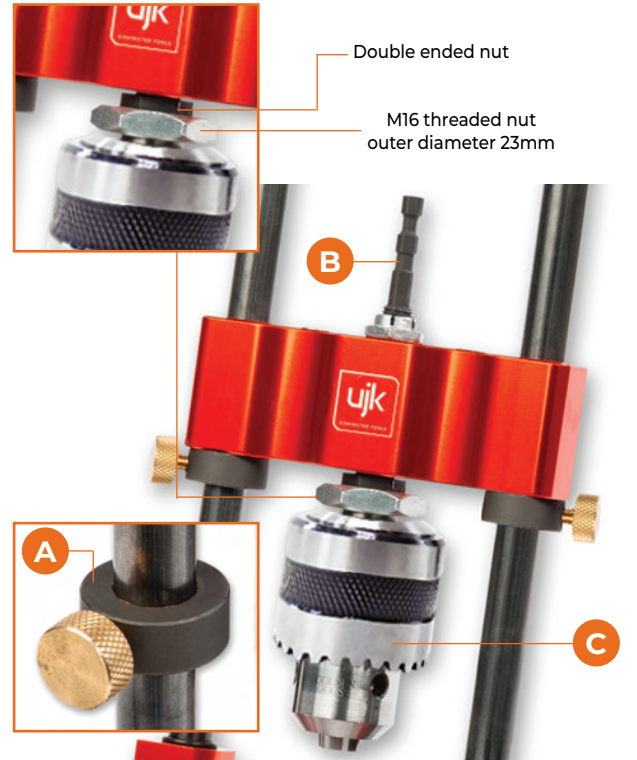
2 Screw the pins into the base



3 Lower the drill guide onto the workpiece and twist the unit so the pins are against the timber. The drill guide is now centred

UJK is a registered trade mark of Axminster Tool Centre

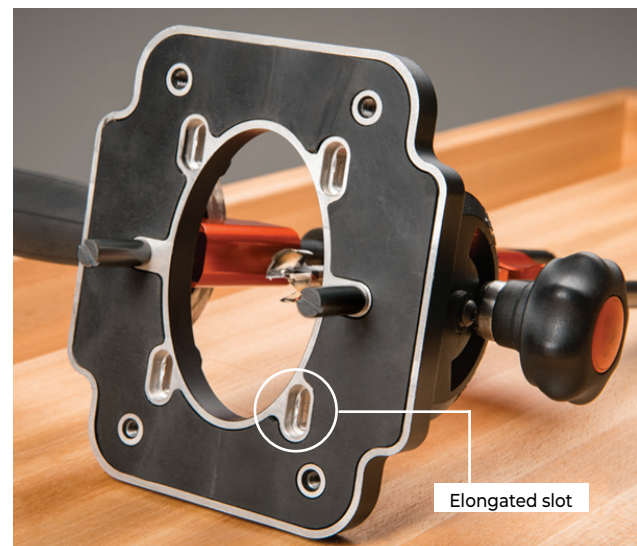
OVERVIEW



Adjustable depth stop collar, (A). 1/4" Hex drive allowing you to use either a mains or cordless drill, (B). To the end of the drive shaft is a 3-jaw, 1 to 10mm geared chuck, (C).

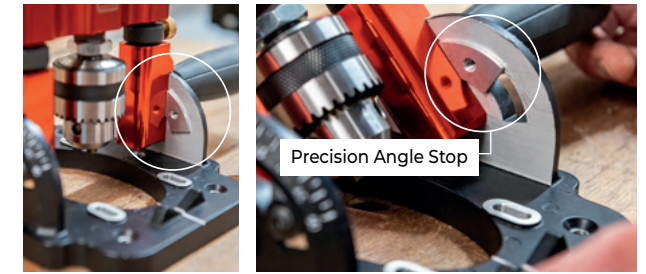


The quadrants on both sides of the base allows the assembly to be tilted + or - 60° and clamped in place with the clamping knob.



To the underside of the drill guide base is a high friction rubberised pad preventing the drill guide from moving while drilling. The four elongated slots to the centre are for mounting the optional 'Self Centring Vice' code 106216.

DRILLING ANGLES



Supplied with the UJK Drill Guide are a pair of precision angle stops. These stops are specifically designed to allow users to set precise angles for their drilling tasks, offering increased control and repeat accuracy in their work. With angle stops, users can work more efficiently by eliminating the need for manual measurements and guesswork. This results in reduced errors and wasted materials, ultimately saving time and effort. The precision angle stops are machined to ensure that an accurate 90° drilling position is achieved. These stops can also be adjusted to enable a precise repeat stop at any angle and can be fitted on both sides of the quadrant.



Drilling holes at set angles, see (D) picture. Using the site lines to align the UJK drill guide before drilling, see (E) picture.



The UJK drill guide can be fixed in position using the four countersink holes in the drill guide base, see picture above.