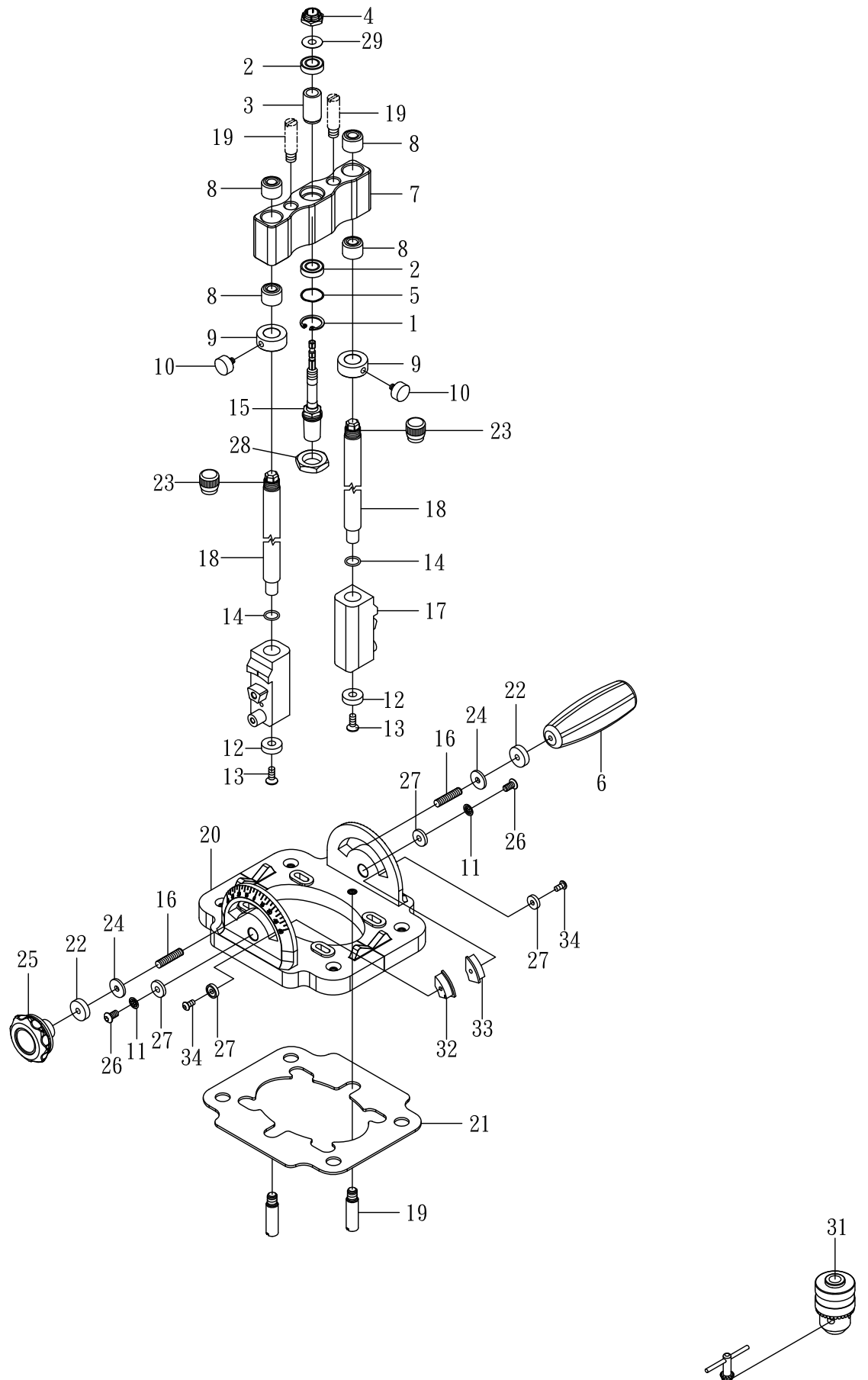


Drill Guide Assembly



Drill Guide Assembly

Index No.	Part No.	Description	Size	Qty.
1.....	919R01900.....	Retaining Ring.....	R19.....	...1
2.....	9236800ZZ.....	Ball Bearing.....	6800ZZ.....	...2
3.....	50200003.....	Spacer.....1
4.....	50200004.....	Hex Nut.....	M10.....	...1
5.....	50200005.....	Wave Washer.....1
6.....	939M06015.....	Handle Knob.....	M6x15.....	...1
7.....	50200007.....	Spindle Housing.....1
8.....	50200008.....	Bushing.....4
9.....	50200009.....	Location Ring.....2
10.....	50200010.....	Brass Bolt.....2
11.....	934M05000.....	Lock Grommet.....	M5.....	...2
12.....	50200012.....	Washer.....2
13.....	903M06016.....	Flat Head Cap Screw.....	M6x16.....	...2
14.....	94300002.....	O-Ring.....2
15.....	50200015A.....	Spindle.....	JT2S.....	...1
16.....	908M06030.....	Set Screw.....	M6x30.....	...2
17.....	50200017.....	Angle Base.....2
18.....	50000018.....	Guide Post.....2
19.....	50200019.....	Pin.....2
20.....	50200020A.....	Base.....1
21.....	50200021.....	Rubber Pad.....1
22.....	50200035.....	Collar Spacer.....2
23.....	50200029A.....	Rubber Cap.....2
24.....	914M062025A.....	Plastic Washer.....2
25.....	939M06C22S.....	Lock.....1
26.....	902M05010A.....	Hex Socket Cap Screw.....	M5x10.....	...2
27.....	50200027.....	Washer.....4
28.....	910M16008.....	Hex Nut.....	M16.....	...1
29.....	914M101603A.....	Washer.....1
31.....	50200100.....	Drill Chuck(Optional)	10mm.....	...1
.....	50200101.....	Drill Chuck(Optional)	13mm.....	...1
32.....	50200075.....	Zero Setting Block(L)1
33.....	50200076.....	Zero Setting Block(R)1
34.....	902M05010.....	Hex Socket Cap Screw.....	M5x10.....	...2