



Universal Sub-Base Code 210118

Universal Sub-Base & Fixing Kit Code 718650

Original Instructions

Universal Sub-Base



- Circular sub-base offers maximum versatility.
- Precision machined from aluminium with a low friction surface coating
- Designed to accept standard Axminster or Trend style guide bushes.
- Suitable for a wide range of routers; including Bosch, Makita, Elu, DeWalt, Festool, Trend, Ryobi, Hitachi etc.
- Fixing kit is included to cover a variety of thread types.
- 176mm diameter x 7mm thick.



UJK Fixing Kit for Router & Jigs
Code 508626



UJK Stainless Steel Guide Bushes

AT: 11/7/2024
BOOK VERSION: 12

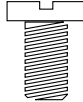
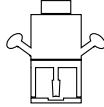
INTRODUCTION

Some routers can be difficult to match up with suitable guide bushes and a universal sub base can be the only solution. A round base can be preferable in many circumstances too. The UJK Universal Sub Base is precision machined from aluminium and fitted with a low friction surface for ease of use. It is designed to accept

standard UJK or Trend style guide bushes and holes for these are drilled with an M4 thread. It is also designed for mounting to a very wide range of different routers, including Bosch, Makita, Elu, Dewalt, Festool, Trend, Ryobi and Hitachi models to name a few. Dimensions: 176mm diameter x 7mm thickness.

Router Chart

Router Model



BOSCH	GOF1600,1700ACE POF52, 400,500A,600ACE	1 3	Fx2 Fx2
	POF800ACE,GOF900A <2003	4	Gx3
	GOF1300ACE,900A>2003	5	Gx3
	GMF1400	0	1x4
	GMF1600CE	19	1x3
CMT	CMT1E,CMT2E,CMT7E	1	Fx2
DEWALT	DW613,614,615,620,621, DW625EK,629, DW625KT	1 1	Fx2 Fx2
DRAPER	R1900V	2	Fx3
	PT1200V	1	Fx3
ELU	OF97(E),MOF177(E),131,98, MOF77,96(E) MK2,69'	1 1	Fx2 Fx2
FELISATTI	R346EC	1	Ex2
	TP246 (E)	6	Ex2
FESTOOL	OF2000(E)	7	Ex3
	OF1E,900(E),1000(E), OF1010	8	Bx4 & Ax3
	OF1400 EBQ-Plus	23	Hx2
FREUD	FT1000(E),2000E	2	Fx3
HITACHI	FM8,ZK2008	9	Ex2
	M8(V)	10	Dx4
	M12V,M12SA	11	Dx4
	TR12	11 & 12	Dx4
HIKOKI	M12VE	11	Dx4
MAFELL	LO50E	8	Bx4
	LO65EC	3	Dx2
	LO55	21 & 2	Dx2
MAKITA	3620,3612BR,3600B	13	Dx2
	3612(C)	14	Ex2
	RP0910,1110C	1	Fx2
	RP2301FCX	22	Bx4
PRO	CLM1250R >11/03,CLM2050R	1	Fx2
PERLES	OF808(E)>1999',2-808(E)	1	Hx2
	OF9(E)	1	Hx2
PEUGEOT	DEF570E,DF55E	15	Ex2
RYOBI	RE600N,R600N,RE601	13	Dx2
	ERT1500V	13	Dx2
	R500,502	16	Ax4
	R150,151,RE120,155K	15	Ex2
SKIL	1835U,1875U1	17	Cx3
TREND	T3,T4,T5,T5MK2',T9,T10,T11, T7EK*	1 10	Hx2 Ax2
TRITON	TRA001	21	1/4" UNC 6.35mm
WADKIN	R500	16	Ax4

* Requires 4 x M4 washers. 2 underneath each screw



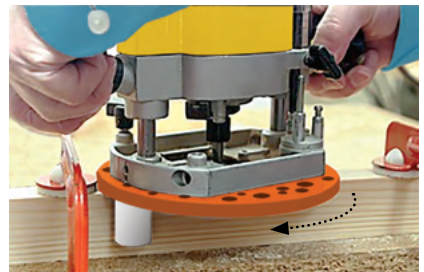
Remove the routers base plate and place safely away.



Setup 1: Lineup the holes in the sub-base plate with the holes in your router and secure in place. Mount the guide bush to the centre of the sub-base with two countersink screws.



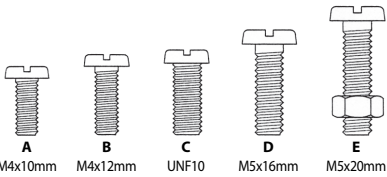
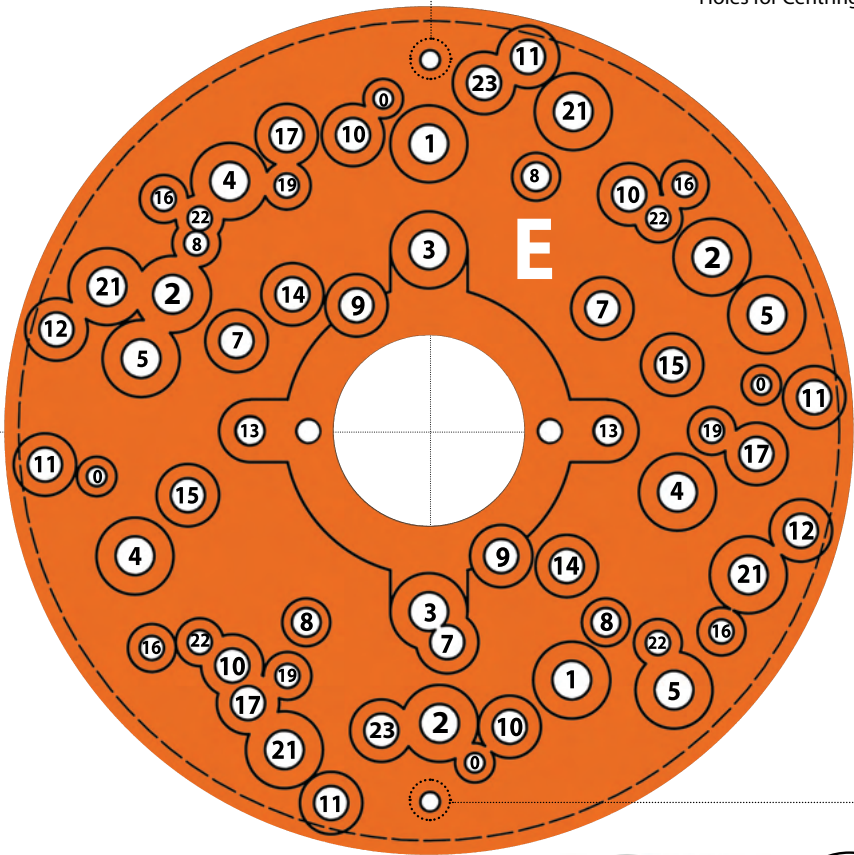
Setup 2: Mount the centring pegs on to the base plate.



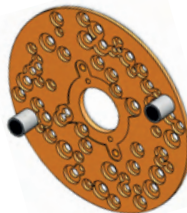
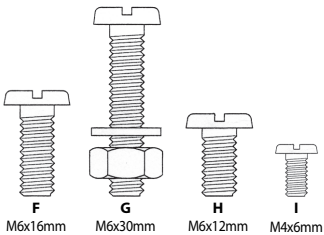
Position the router over the workpiece and rotate until the centring pegs are against the side of the timber, this centres the router bit. The centring pegs also steady the cut acting as stabilisers preventing the router from tilting.

UNIVERSAL BASE PLATE

Holes for Centring Pegs



UJK Stainless Steel Guide Bushes
(Available Separately)



Base Plate Self Centring Pegs



UJK, Axminster, Devon, EX13 5PH

ujktools.com