

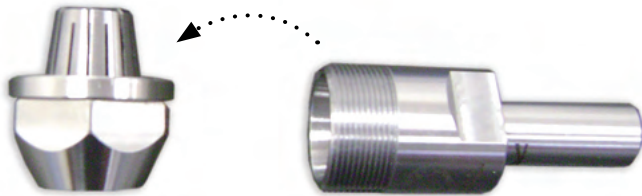


Router Collet Extension (1/2" Shank)

Changing the Collet

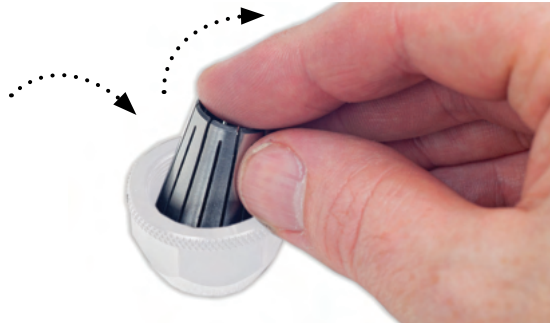
Code 211367

1



Remove the collet holder nut from the main body.

2

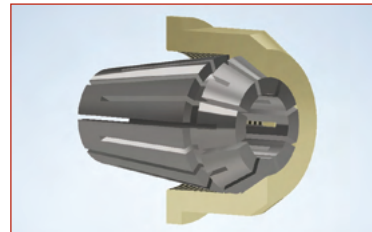
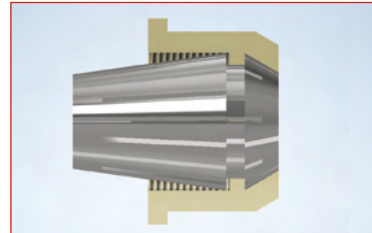


Pull the collet towards you to remove it from the holder.



3

Insert the new collet down into the nut, making sure the collet is seated correctly into the holder, you will hear it 'Click' home.



4



Re-attach the collet holder nut to the main body.

UJK, Axminster,
Devon, EX13 5PH

ujktools.com